

TECHNICAL UNIVERZITY
IN ZVOLEN, SLOVAKIA

Recreational Use of Municipal Forests in Košice

Vladimír Juško

Stanislav Azor

Katarína Hlaváčová

Introduction

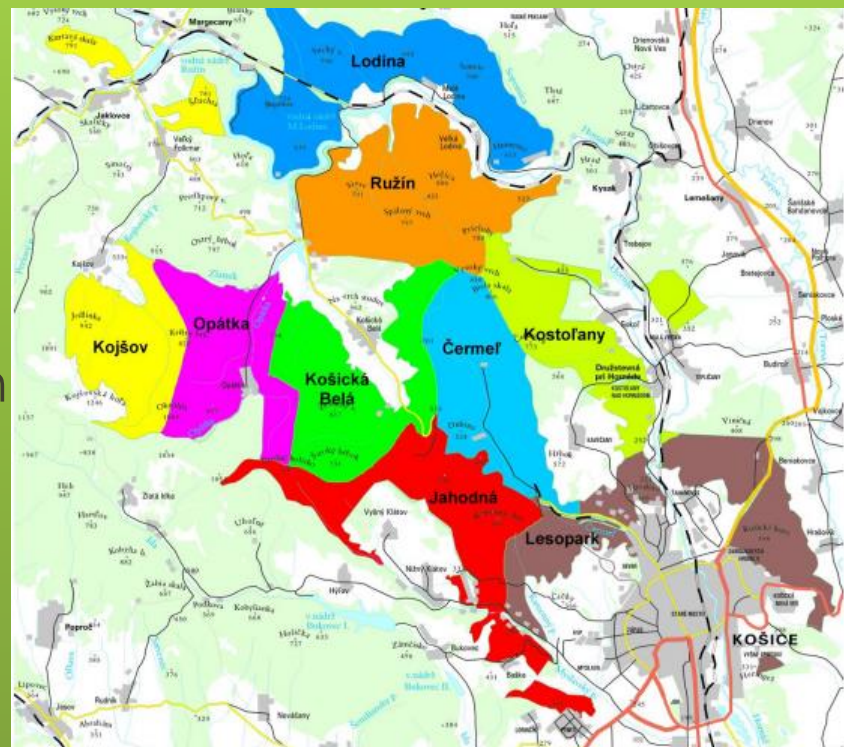
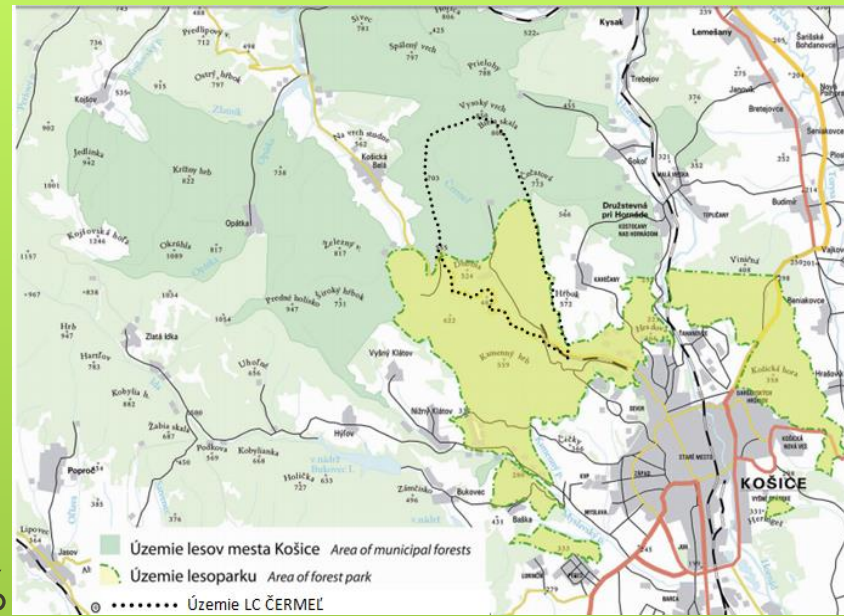
- missions of municipal and recreation forests
- physical activities in forest environment
- forest road system
- the aim of the paper

Materials and methods

- methodology
 - terrain data collection:
 - mapping of traffic accessibility
 - its use for recreation
 - new design of the interest area :
 - function area, tourist trails, small buildings of recreational character
 - designed by the software

Municipal Forests of Košice:

- total area of 18, 984 ha
- the largest forest property in Slovakia
- cultural and recreational function 23%
- 9 forest areas
- research - the forest unit Čermel' (area of 1, 951 ha, recreational function 36%



Results and discussion

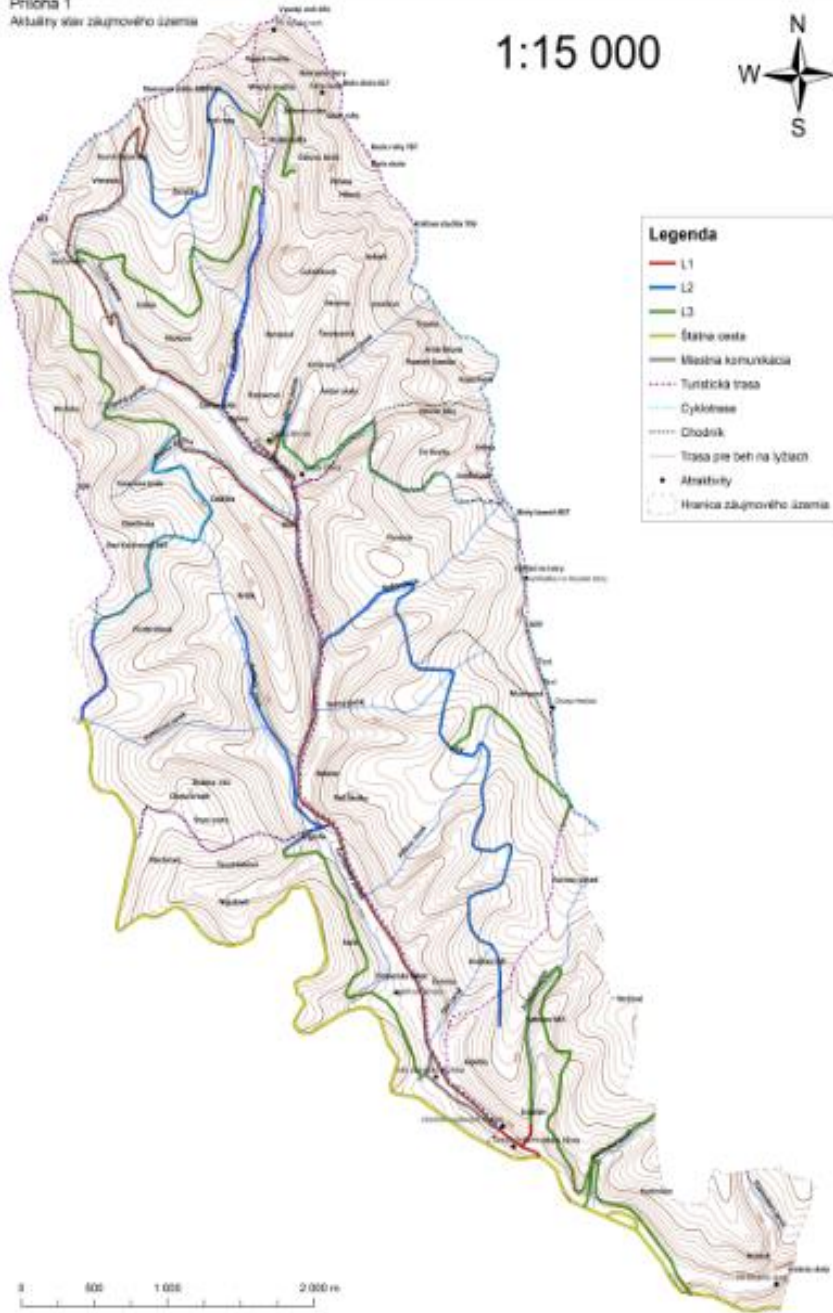
Traffic accessibility of the interest area

roads	category	length [m]	ratio [%]	density [m.ha ⁻¹]
forest (own)	1L	11,100	22.1	6.68
	2L	13,165	26.2	6.74
	3L + TPC	17,110	34.0	8.76
other	state	8,100	16.1	4.15
	local	800	1.6	0.45
<i>total</i>		50,275	100.0	25.8



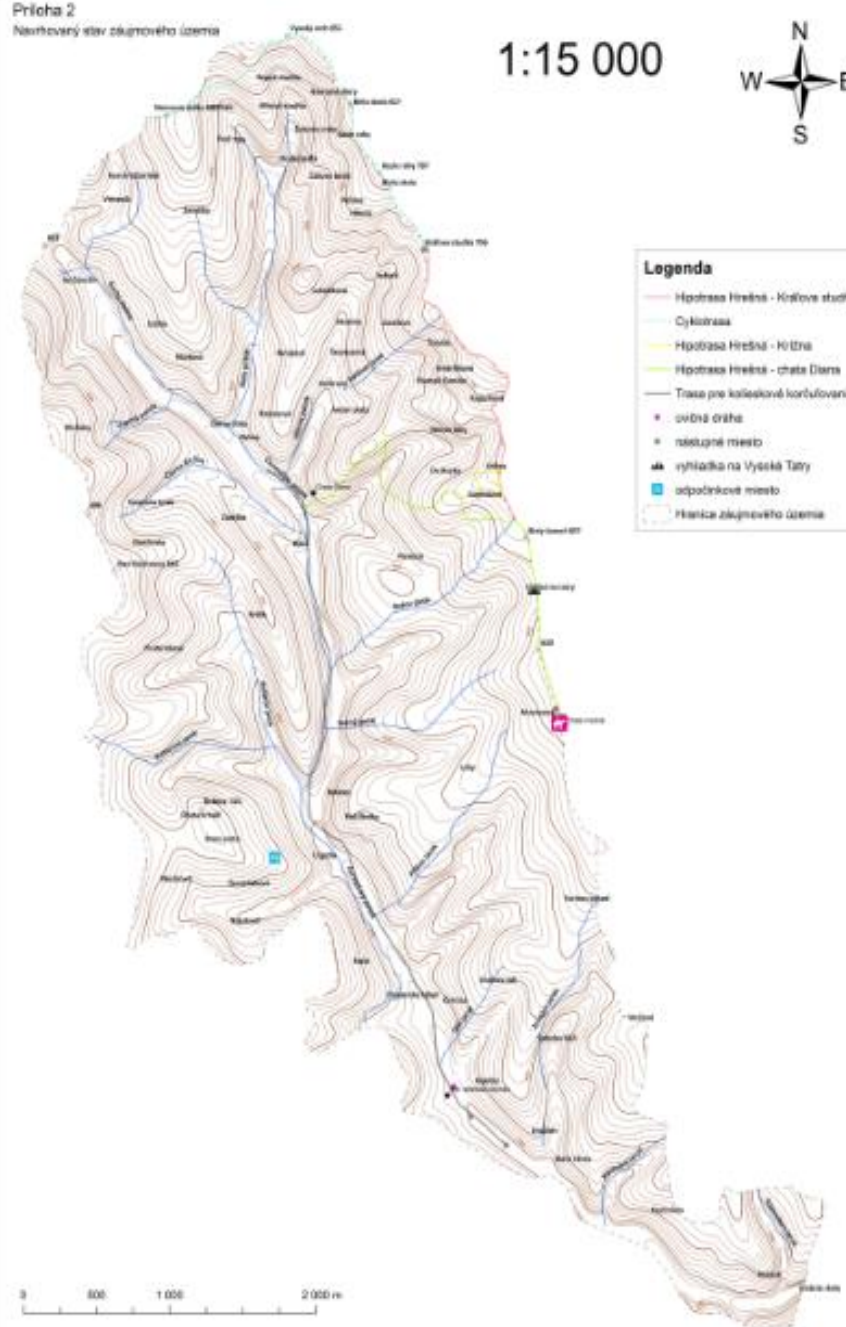
Príloha 1
Aktuálny stav záujmového územia

1:15 000



Príloha 2
Navrhovaný stav záujmového územia

1:15 000



Recreation areas:

Recreational centre Alpinka

- Restaurant with summer terrace, buffets with refreshments
- Children's playground
- Rope climbing park Tanzánia
- Paintball and airsoft playground
- Golf course
- Historical narrow gauge children's railroad
- Nature touristic trail „Chodník zvedavých myšiek“ (Trail of Curious Mice)
- many tourist trails and cycle routes



Tourist cottage Hrešná

- offers a variety of services both during summer and winter seasons (ski resort Kavečany, horse stables, cross-country skiing tracks and hiking trails, or bicycle routes)

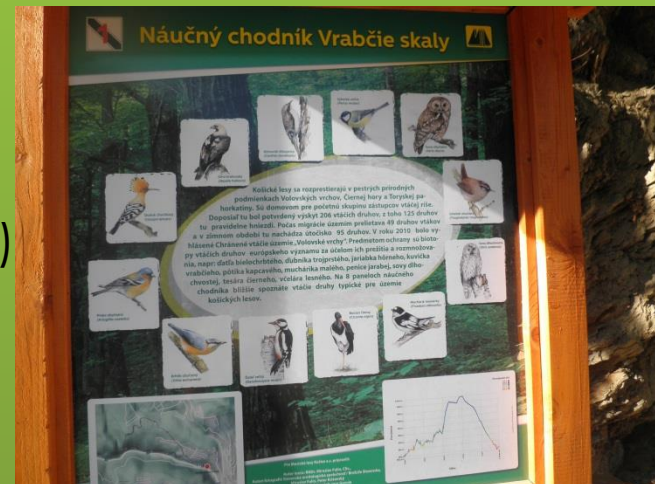


Vysoký vrch (mountain)

Biela skala (rock), **Pol'ana**

nature touristic trail Vrabčie skaly (rocks)

caves (Křížová cave, Previsová cave, Veľká sokol'ská cave)

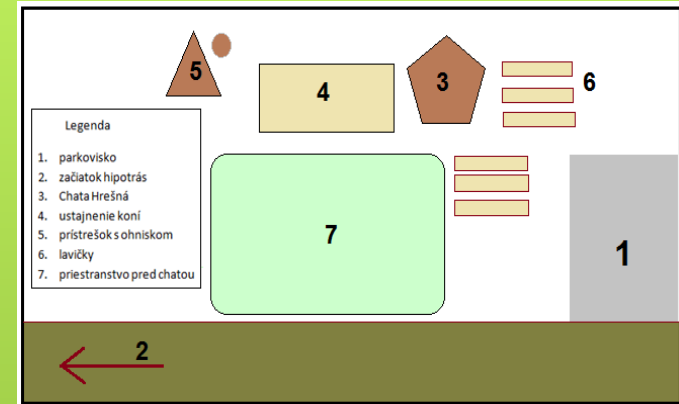


Characteristics of marked hiking trails

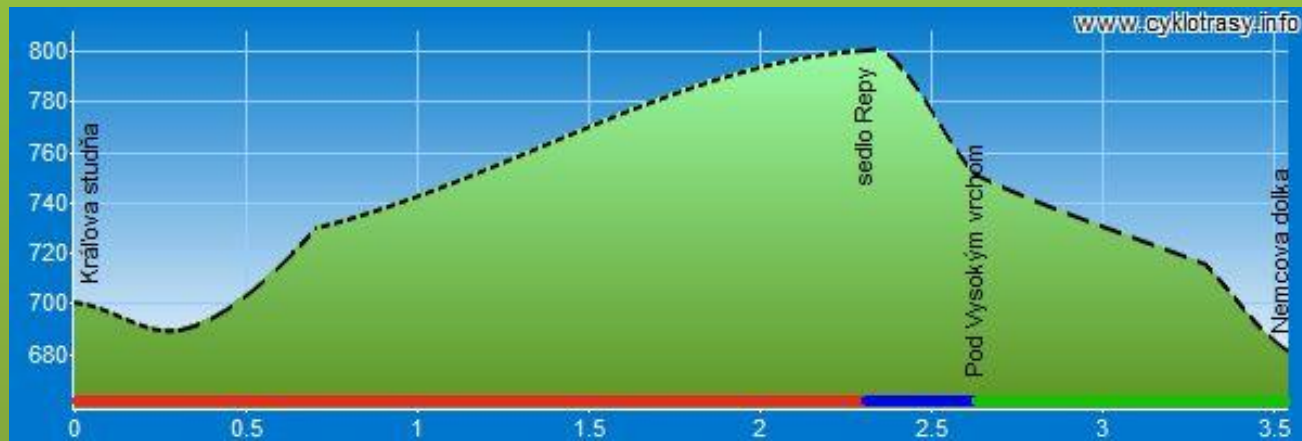
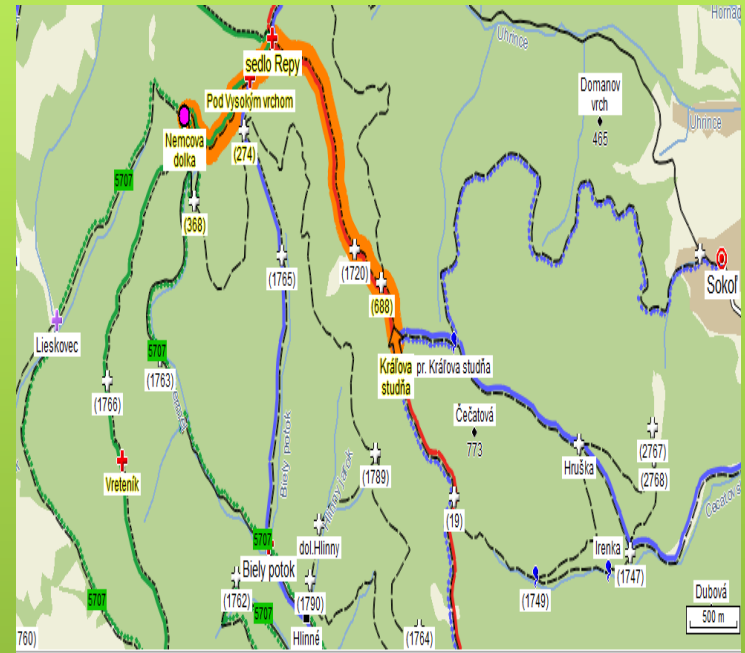
	Route No.	Route identification	length (km)	elevation (m)	gradient (%)	difficulty
Tourist/ hiking trail	0901	fork Hrešná - saddleback Repy (E8)	6.3	223	4	medium
	2815	Alpinka - saddleback Repy	7.7	498	6,5	medium
	5741	Čermel'ská hollow - fork Hrešná - Diana	7.4	305	4	medium
	8724	Stará Jahodná - Čermel'ská walley fork	2.3	150	6,5	easy
	5715	Stará Jahodná - saddleback Repy	7.8	313	4	medium
Bicycle route	1	Alpinka - Nemcova dolka – Alpinka	24.1	390	1,6	medium
	1a	Hlinné – Gajdošova	2.8	170	6,1	medium
	2	fork Kavečany - Kráľova studňa	5.5	135	2,5	medium
Cross-country skiing track	1	Hrešná - saddleback 0901 trail and back	2.0	54	3	easy
	2	Hrešná - Janošová meadow and back	3.0	54	2,7	easy
	3	Hrešná - before turning Krížna and back	4.0	58	1,5	medium
	4	Hrešná - Krížna meadow and back	5.0	63	1,3	medium

The design for increased recreational use :

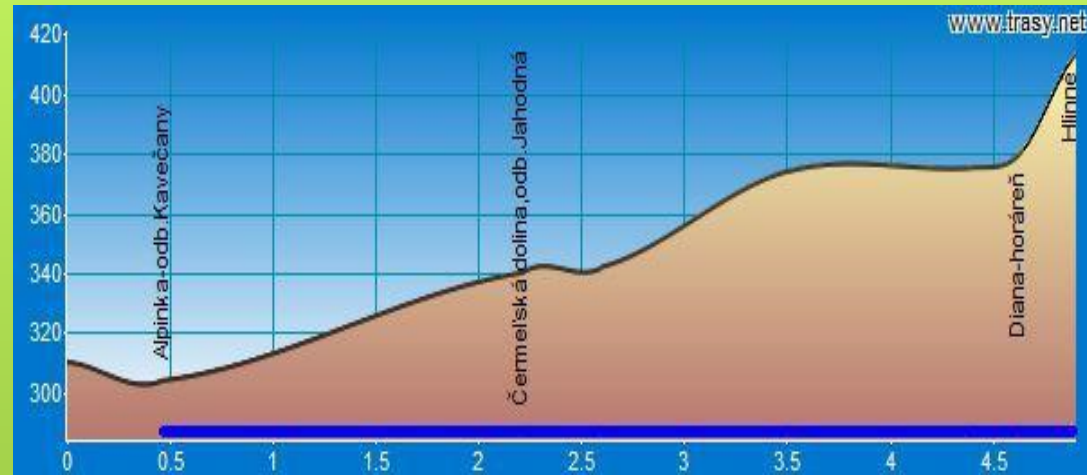
- starting points
- bicycle route
- in-line route
- horse riding routes
- forest trainer track
- rest areas



Bicycle route



In-line route



characteristic	value
length of route	3,54 km
total time	0:20 h
climb in sections	12.1 km (46 %), 0:35 h
falling in sections	14.2 km (54 %), 0:31 h
maximal height	706 AMSL.
minimum height	482 AMSL
camber	224 m
total height up hill	491 m (slope 4 %)
total height down hill	607 m (slope 3.5 %)
max. slope up hill	8.1%
max. down hill slope	10.9%

Forest trainer track





Thank you for your attention